



Collaborative Open Resource Environment - for Materials

Creating a Personal Web page using Netvibes

Author: Lisa Rogers

Date: 19/04/2010

Version: 1

This guide helps you to create a personalised web page using Netvibes. You can add customised 'widgets' or 'modules' linking to resources on popular file-sharing web sites, such as Flickr or YouTube, add RSS feeds, Facebook updates and many other applications.

Students could use Netvibes to create a personal learning environment (PLE), allowing them to pull together open educational resources from other web sites.

www.core.materials.ac.uk



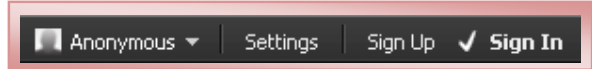
UK Centre
for Materials
Education

Upload Resources to Netvibes

Netvibes is a personalised home page which allows users to add customised widgets or modules to various customisable tabs. Examples of such modules could be Facebook updates, photo streams from Flickr, Google Search, RSS Feeds.

Students could use Netvibes as a personal learning environment, allowing them to pull together open educational resources from other sites on the web.

Go to www.netvibes.com and click on “Sign Up” in the top right of the page.



In the pop up box you should create a username. Enter the other details and click “Sign Up” (assuming you agree to the terms of use). You will be sent a confirmation email which you will need to complete registration.

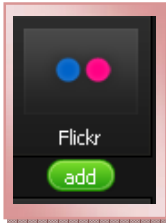


The page will be pre-populated with widgets which you may or may not wish to keep. Remove any unnecessary widgets by clicking on the small x in the top right corner of each widget. Your page starts off with two tabs, you can add more by clicking “New Tab”.

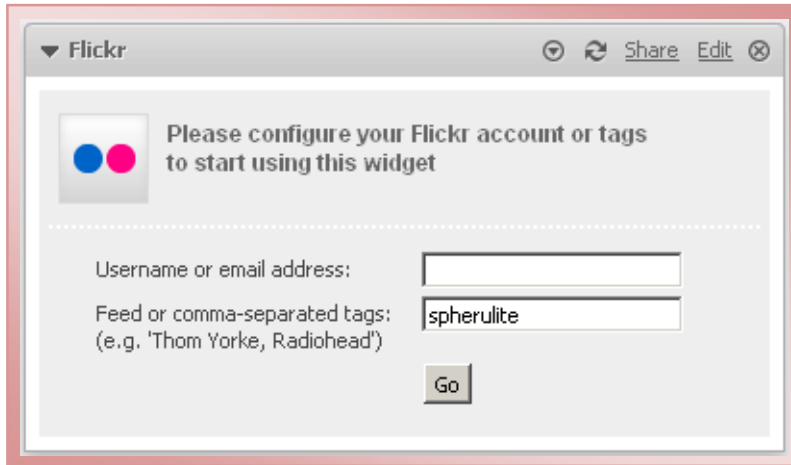


To add resources to your page please click on the “Add Content” button at the top left hand corner of the page. This displays a drop down menu of widgets to add. Try browsing through essential widgets.

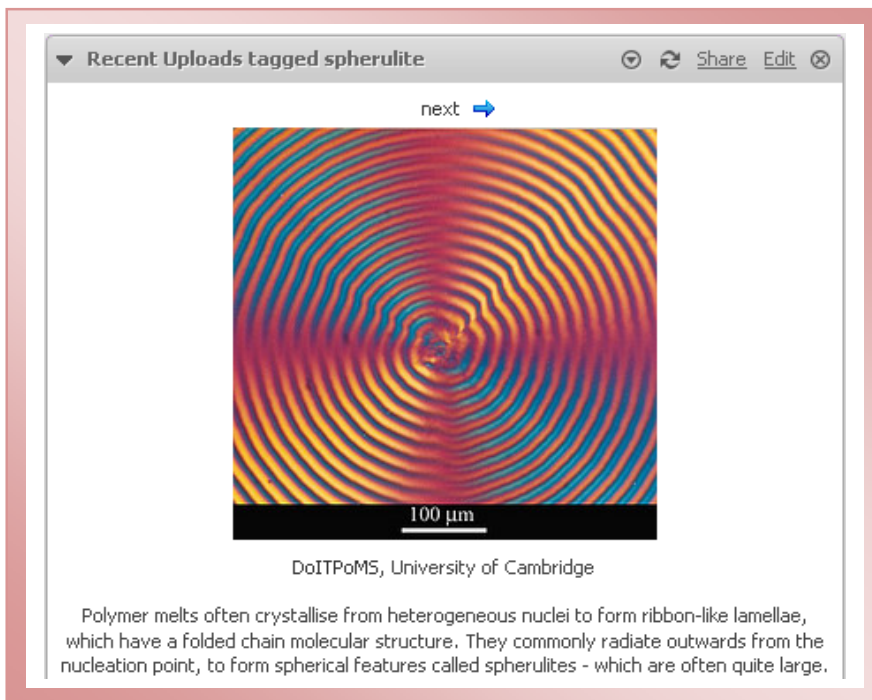
Adding a Flickr Widget

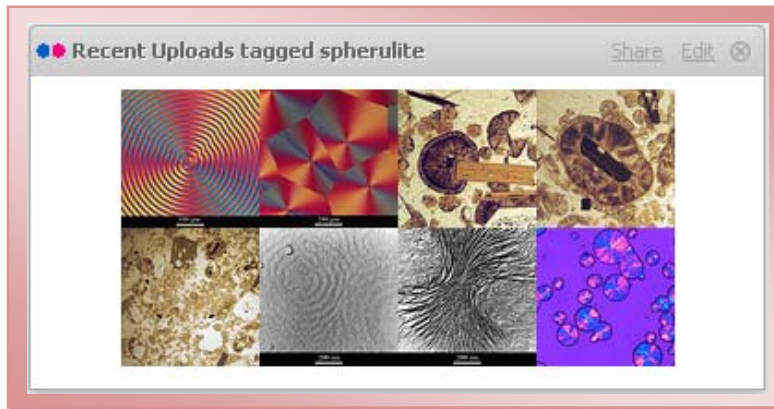
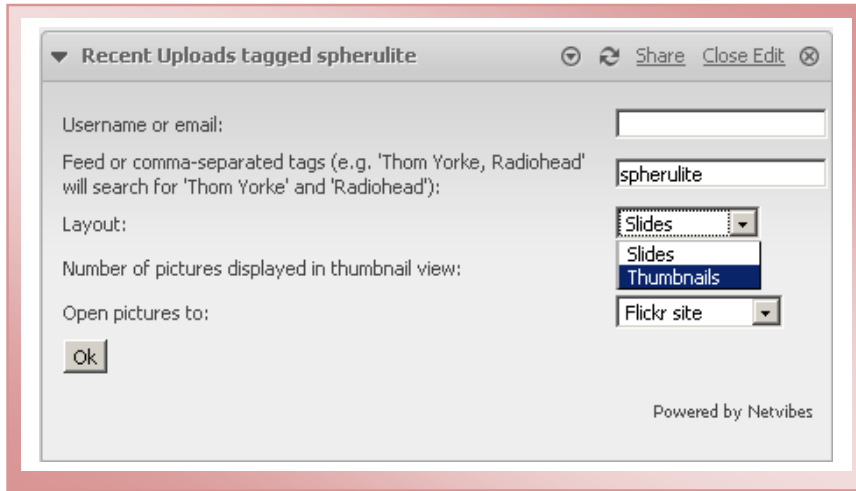


Click on “Add Content” then either browse under essential widgets and search for Flickr. Click on the “Add” button below the Flickr widget to add it to your page (it will appear in the top left corner of your current tab). You can drag and drop this widget to another position on your current tab or onto another tab.

A window titled "Flickr" with a dropdown arrow on the left and icons for "Share", "Edit", and "Close" on the right. The main content area has a header that says "Please configure your Flickr account or tags to start using this widget" next to the Flickr logo. Below this is a form with two input fields: "Username or email address:" and "Feed or comma-separated tags: (e.g. 'Thom Yorke, Radiohead')". The second field contains the text "spherulite". A "Go" button is positioned below the second field.

You can configure this module by entering tags of the images you wish to see. For example entering “spherulite” and clicking “Go” would return up to 20 images tagged “spherulite”. This will give the default slide view, displaying the image and its description.





To edit the widget, click on “Edit” at the top right of the widget.

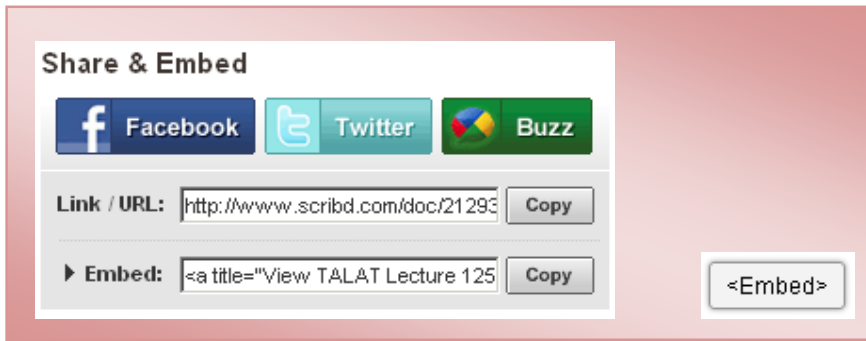
You can change the tags to search or change from Slides to Thumbnails.

Click “Ok” when you are finished editing.

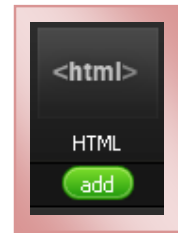
Adding Content from YouTube, Scribd, SlideShare to Netvibes

YouTube, Scribd and SlideShare allow users to embed the resources in their own environments such as their webpages, blogs or even in their Netvibes page and provide “embed code” to do this. Firstly find a resource on one of these sites you wish to embed and copy the embed code. In SlideShare and Scribd this appears at the top right of the page, in YouTube the Embed Button is located underneath the video.

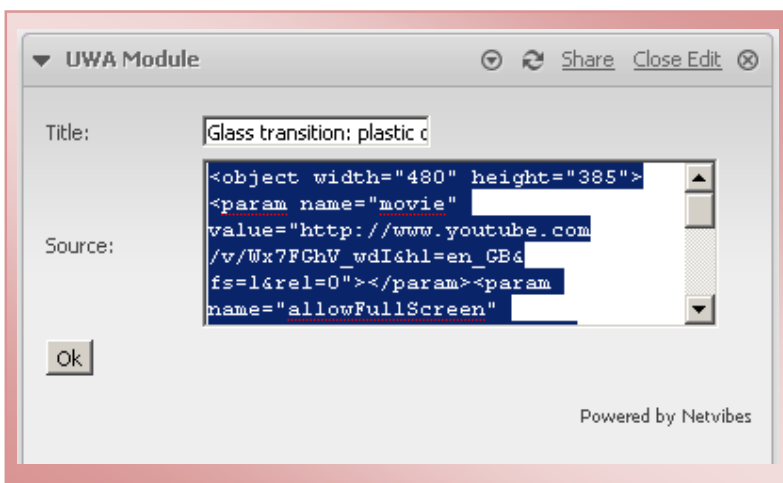




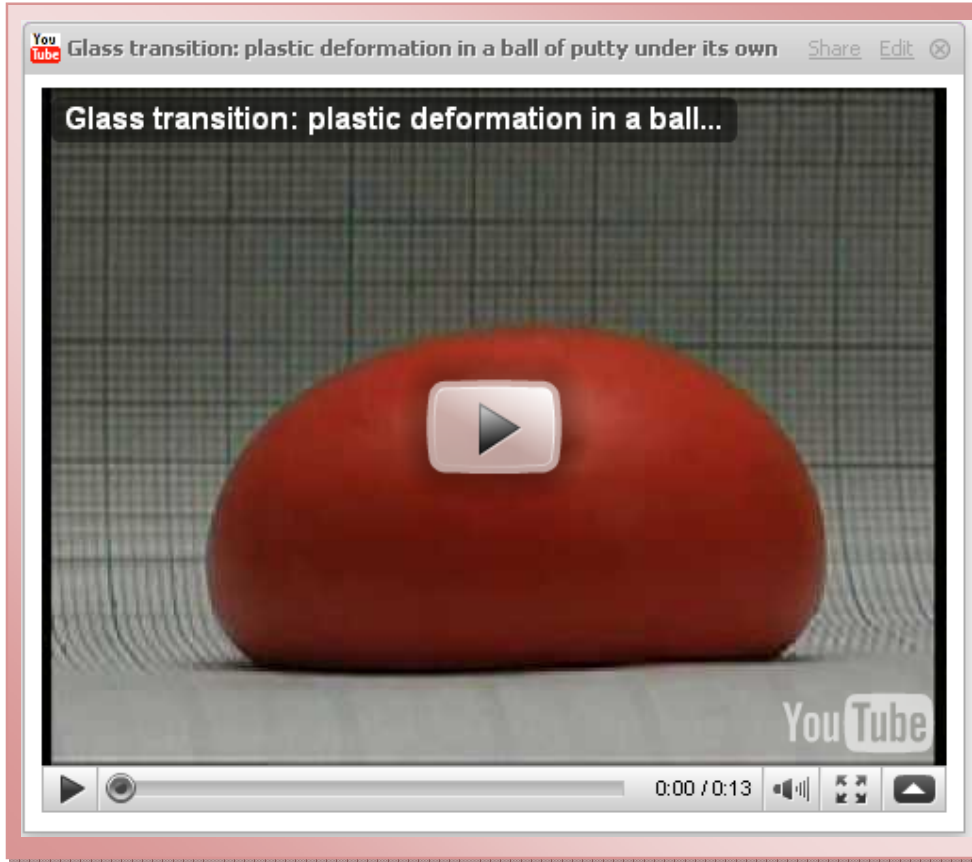
Once you have copied the embed code, return to your Netvibes page and Click “Add Content” Click on “Essential Widgets” and browse to HTML and click the “add” button underneath it. (This may appear on the second page of results).



Click on Edit in the top right of the widget, give your widget a name (e.g. The name of the resource and paste the embed code in the source box, click OK).



This will display your chosen document, presentation or video in your Netvibes page.



A video tutorial demonstrating how Netvibes could be used to create a personal learning environment can be viewed at www.netvibes.com/pledemo.